

MALDIVES LAND SURVEY AUTHORITY

MINISTRY OF HOUSING AND INFRASTRUCTURE
 Office (PABX): +(960) 3004300, Fax: +(960) 3004254
 Email: survey@housing.gov.mv
 Web: www.surveyofmaldives.gov.mv,
 Ameenee Magu, Maafannu, Male', 20392, Maldives.



CONTROL POINT DETAILS	Station Number	PSM5807
Coordinate Information		
Geodetic	Grid	
WGS 84	UTM Zone 43	
Lat: 4°36'55.64092"N	E:	341567.758 m
Long: 73°34'18.31917"E	N:	510316.532 m
Ellp Height: -98.814	Orth Height:	+1.956m
Island Name: FARI THARI HURAA (LD1730)	Date:	20 JUNE 2021

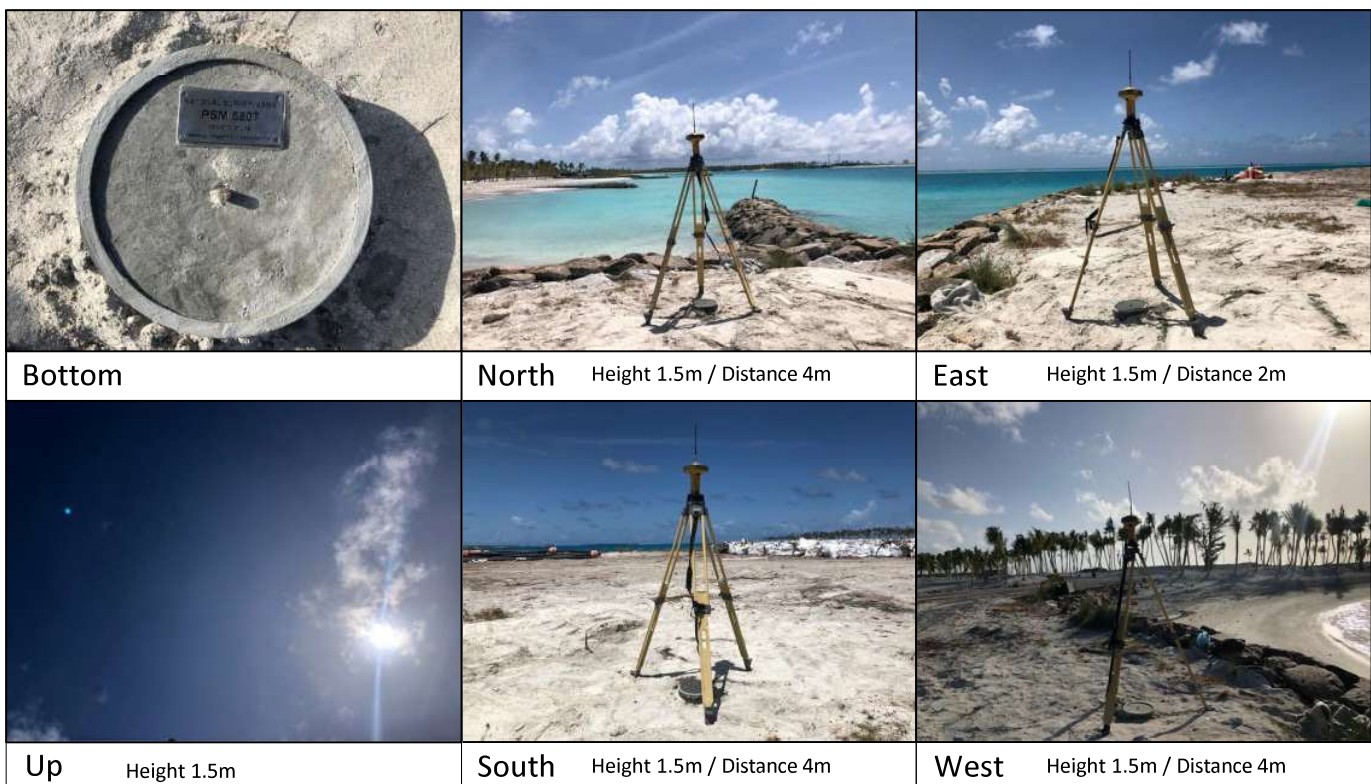
Monument description & method of survey:

- Monument Type A as in Technical Brief
- Stainless steel plate fixed to concrete by Four bolts
- Horizontal coordinates fixed by GNSS Static survey.
- Vertical height corrected using tide prediction data (Hulhule)
- **PSM 5807 is 150mm above ground Level**

General site condition & access:

- Easily accessible area with wide angle of sky visibility
- Located in East side round groyne of the island ,
- Situated on top of the round groyne , edge of the rock boulder revetment crest towards north site.

Owner: MESA RF PRIVATE LTD

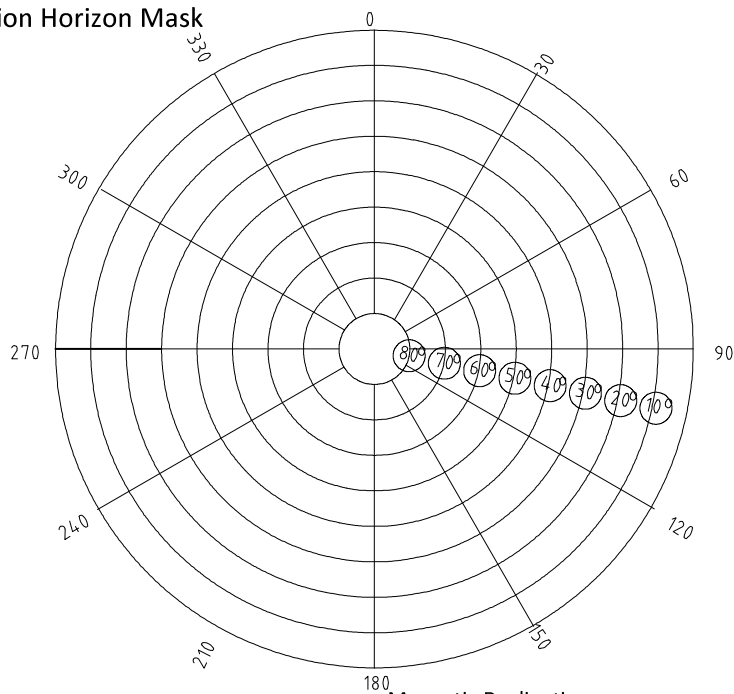


SITE INFORMATION

Station Number

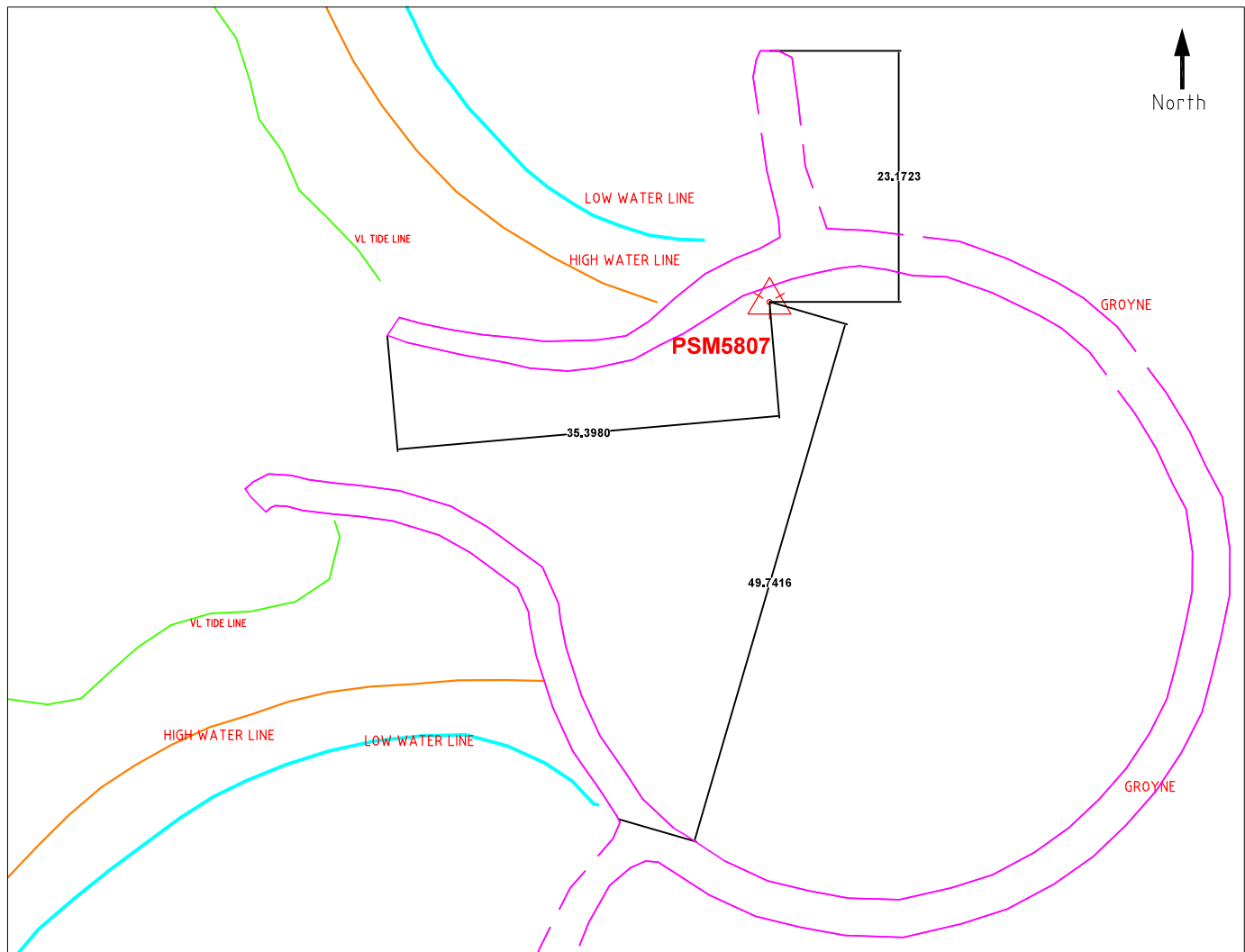
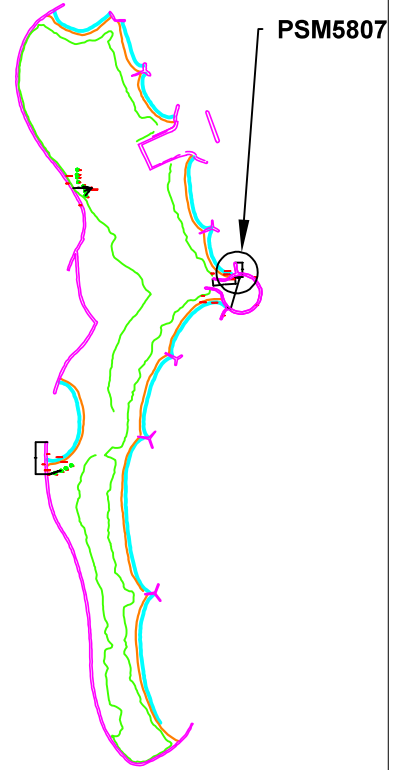
P	S	M	5	8	0	7
---	---	---	---	---	---	---

Station Horizon Mask



Height above Marker that horizon was mapped from 1.5 m

Magnetic Declination Declination applied to this figure?
 Yes No



Sketched by: Abulho

Scale: Not to Scale

Date: 30 JUNE 2021

MALDIVES LAND SURVEY AUTHORITY

MINISTRY OF HOUSING AND INFRASTRUCTURE
 Office (PABX): +(960) 3004300, Fax: +(960) 3004254
 Email: survey@housing.gov.mv
 Web: www.surveyofmaldives.gov.mv,
 Ameenee Magu, Maafannu, Male', 20392, Maldives.



CONTROL POINT DETAILS	Station Number	PSM5808
Coordinate Information		
Geodetic	Grid	
WGS 84	UTM Zone 43	
Lat: 4°36'45.42597"N	E:	341272.216 m
Long: 73°34'08.75023"E	N:	510003.379 m
Ellp Height: -98.946	Orth Height:	+1.824m
Island Name: FARITHARI HURAA (LD1730)	Date:	20 JUNE 2021

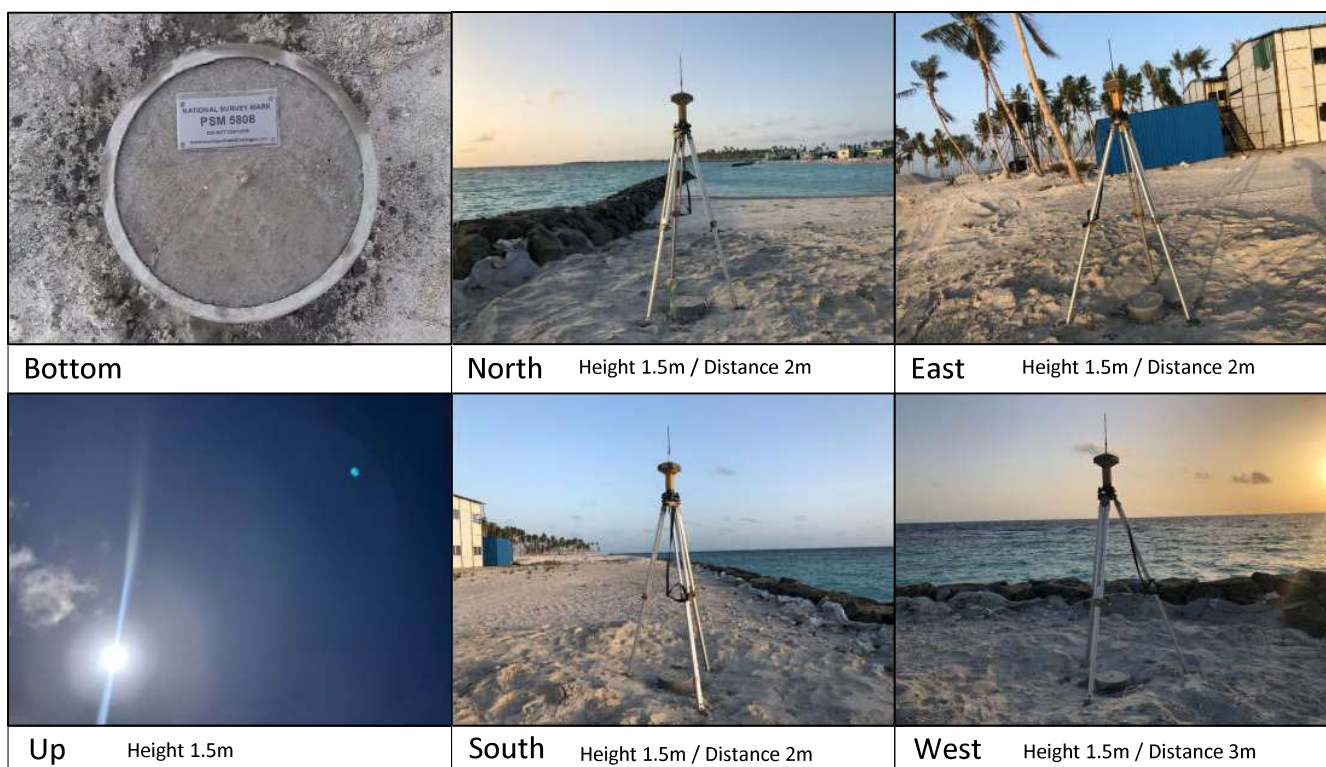
Monument description & method of survey:

- Monument Type A as in Technical Brief
- Stainless steel plate fixed to concrete by Four bolts
- Horizontal coordinates fixed by GNSS Static survey.
- Elevation reduced relative to ellipsoid height difference reference to PSM 5807 which was corrected to Meanwater level by tide prediction table.
- **PSM 5808 is 150mm Above ground Level**

General site condition & access:

- Easily accessible area with wide angle of sky visibility
- Located in West side of the island
- Situated near crest of the rock boulder revetment on west water bay.

Owner: MESA RF PRIVATE LTD

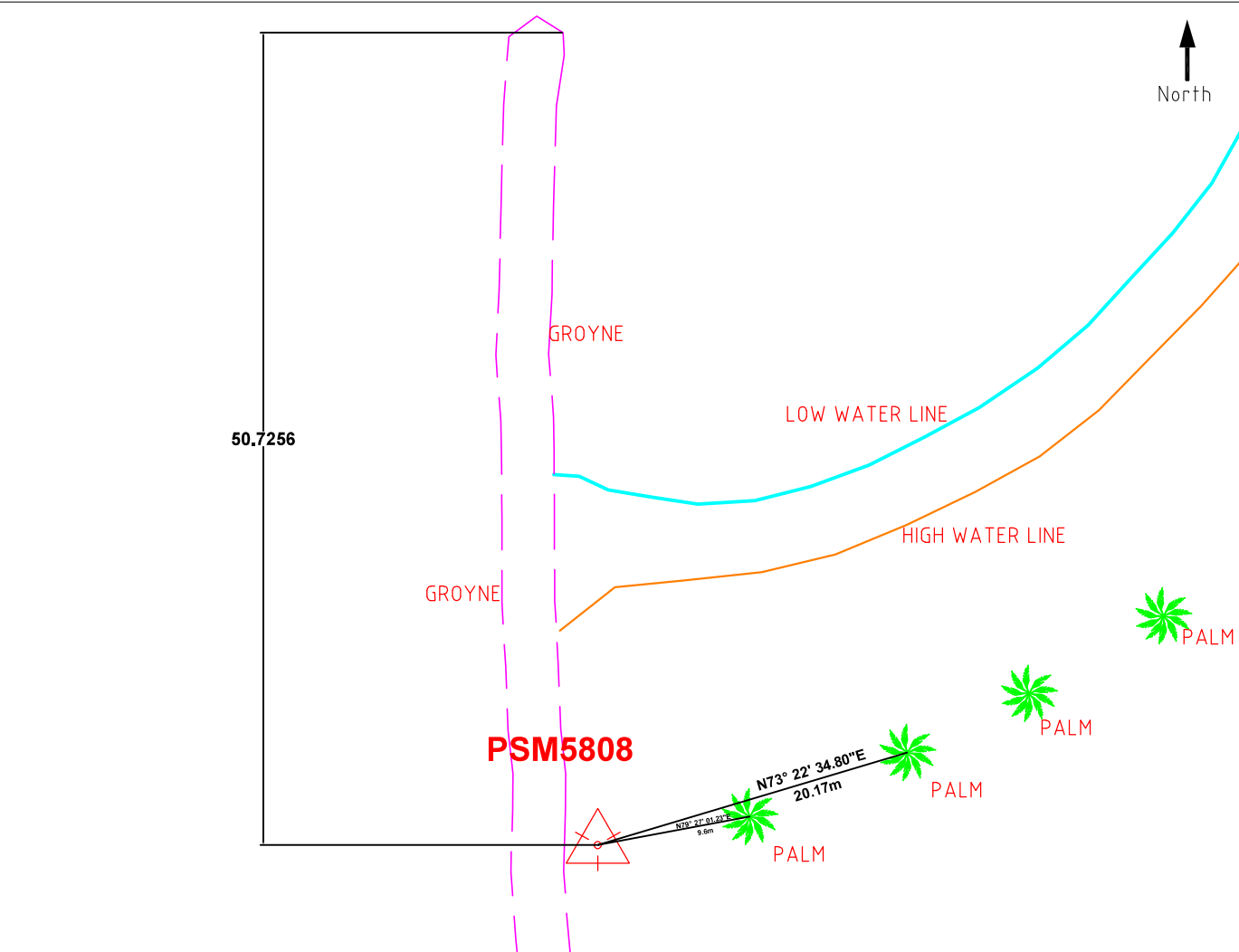
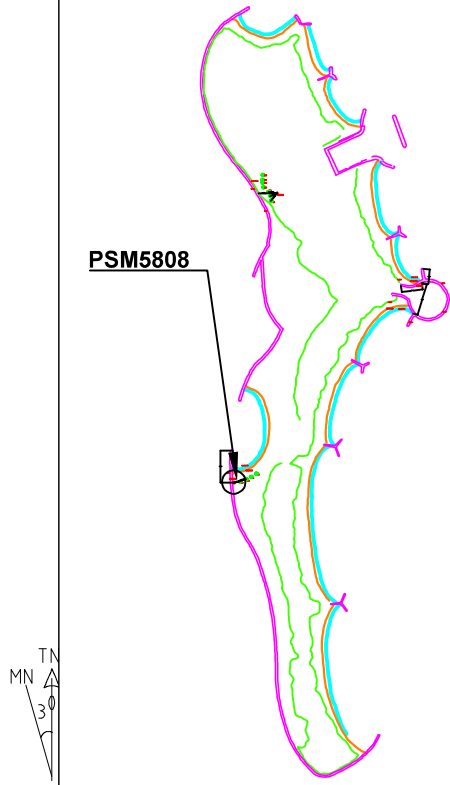
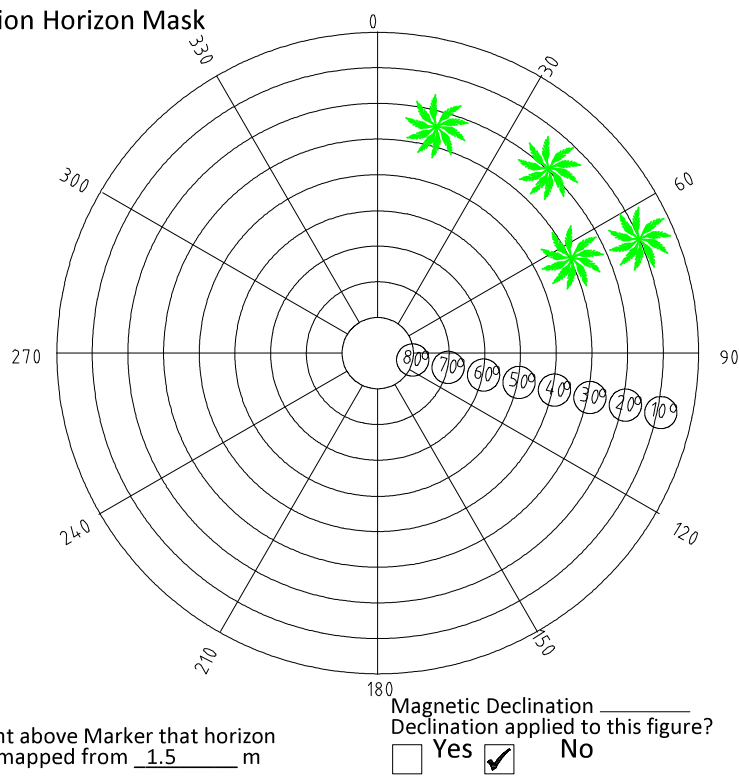


SITE INFORMATION

Station Number

P	S	M	5	8	0	8
---	---	---	---	---	---	---

Station Horizon Mask



Sketched by: Abulho Scale: Not to Scale Date: 30 JUNE 2021

MALDIVES LAND SURVEY AUTHORITY

MINISTRY OF HOUSING AND INFRASTRUCTURE
 Office (PABX): +(960) 3004300, Fax: +(960) 3004254
 Email: survey@housing.gov.mv
 Web: www.surveyofmaldives.gov.mv,
 Ameene Magu, Maafannu, Male', 20392, Maldives.



CONTROL POINT DETAILS	Station Number	PSM 5809
Coordinate Information		
Geodetic	Grid	
WGS 84	UTM Zone 43	
Lat: 4°37'00.22801"N	E:	341340.011 m
Long: 73°34'10.92031"E	N:	510457.879 m
Ellp Height: -98.715	Orth Height: +2.055m	
Island Name: FARITHARI HURAA (LD1730)	Date: 20 JUNE 2021	

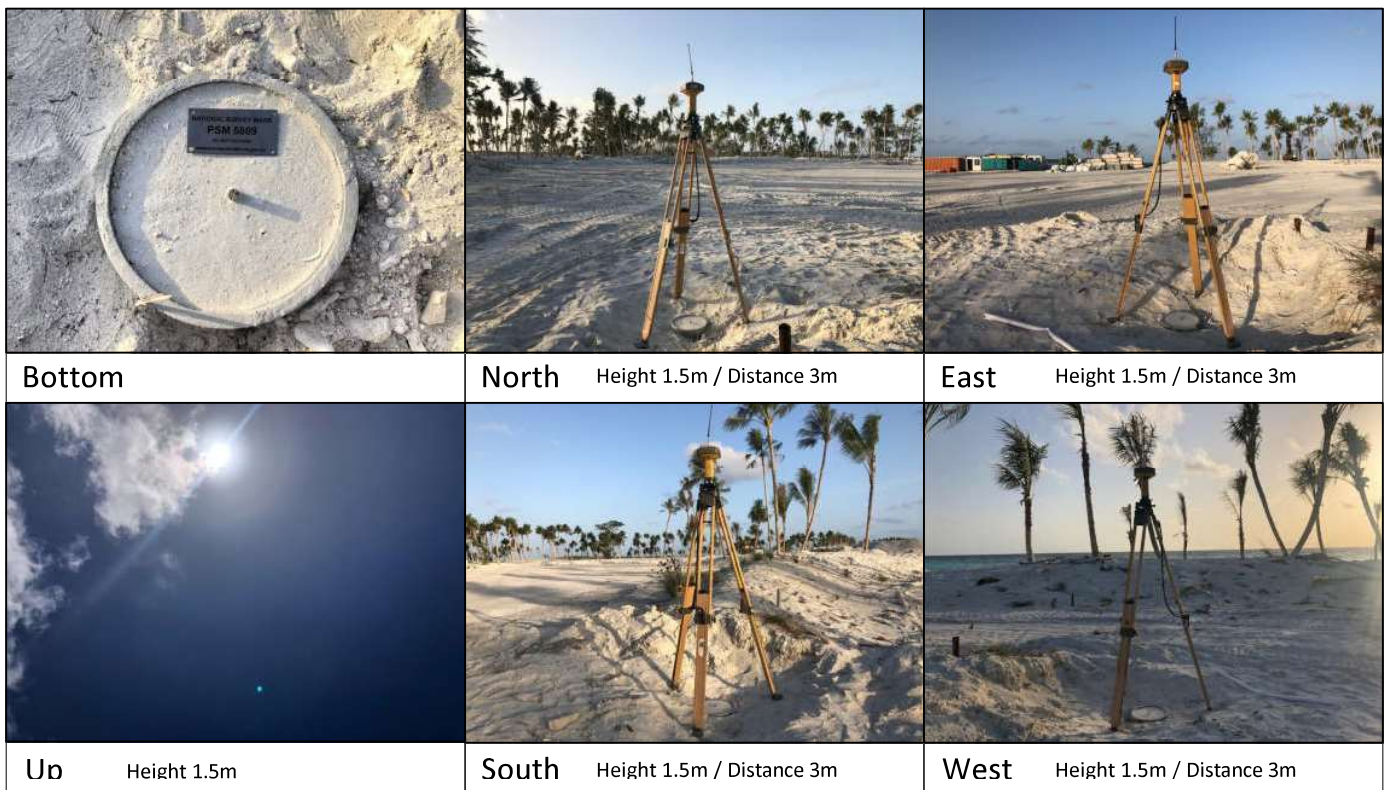
Monument description & method of survey:

- Monument Type A as in Technical Brief
- Stainless steel plate fixed to concrete by Four bolts
- Horizontal coordinates fixed by GNSS Static survey.
- Elevation reduced relative to ellipsoid height difference , reference to PSM 5807 which was corrected to Meanwater level by tide prediction table (Hulhule)
- **PSM 5809 is 150mm above ground Level**

General site condition & access:

- Easily accessible area with wide angle of sky visibility
- Located in North side of the island.
- Situated at opposite side of the harbor ,next to the rock boulder revetment edge.(the main revetment across the island from North to South at West side of the island.

Owner: MESA RF PRIVATE LTD

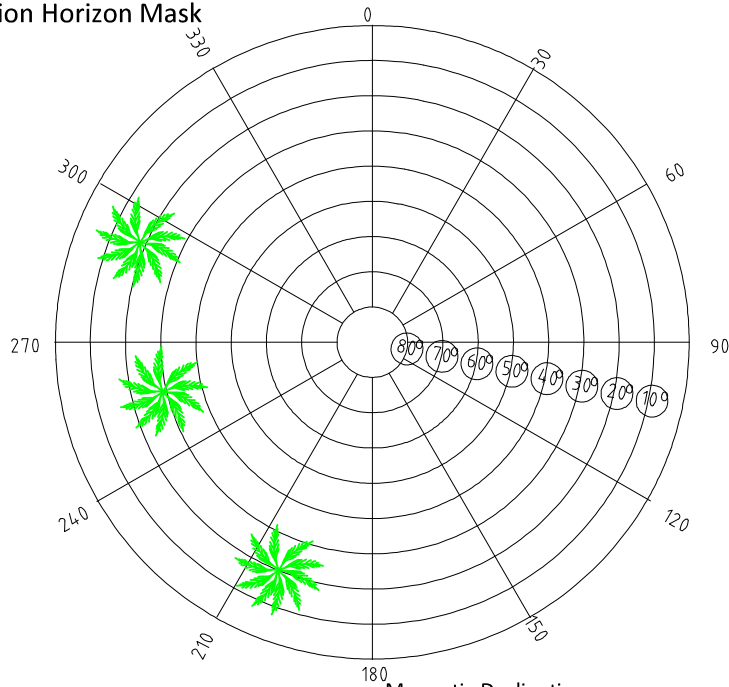


SITE INFORMATION

Station Number

P	S	M	5	8	0	9
---	---	---	---	---	---	---

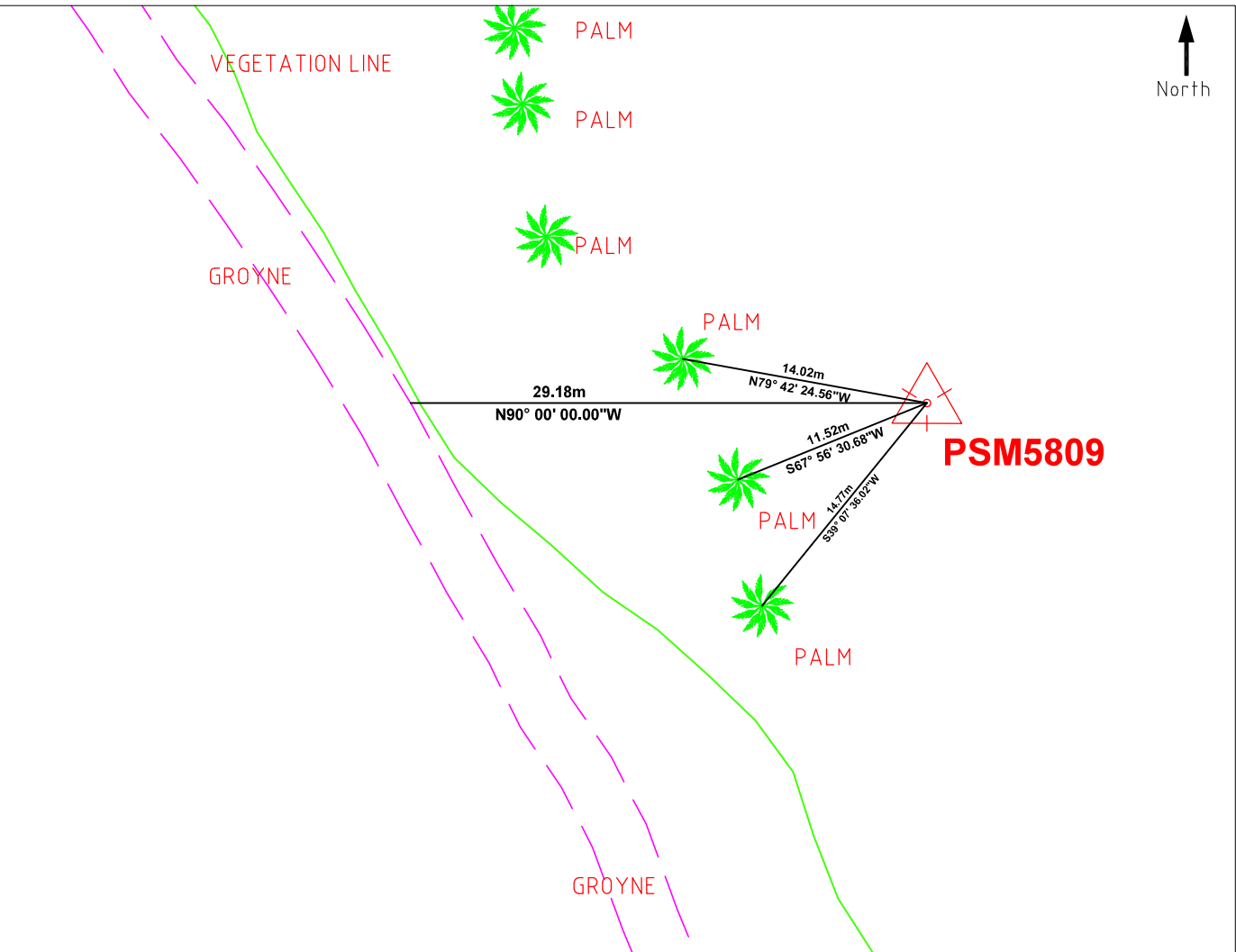
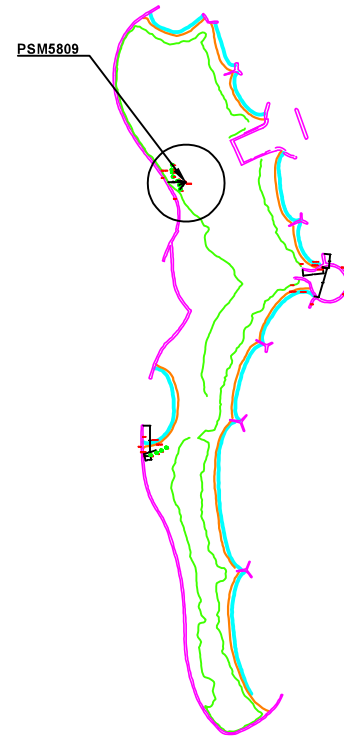
Station Horizon Mask



Height above Marker that horizon was mapped from 1.5 m

Magnetic Declination _____
Declination applied to this figure?

Yes No



Sketched by: Abulho

Scale: Not to Scale

Date: 30 JUNE 2021